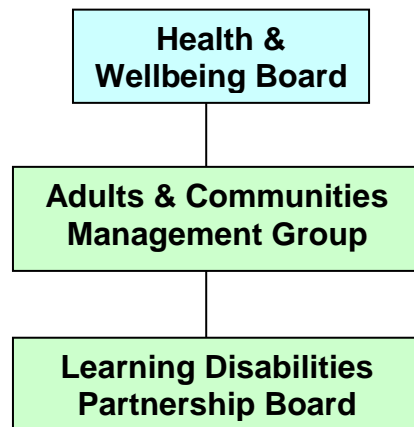


Accountability and Influence

Who do we tell what we are doing?
Who needs to know what we are doing?

This is where the Partnership Board fits into the decision making structure (Governance) of the important people who can decide what happens in Leicestershire



- **Health and Wellbeing Board (H&W)**

The Health and Wellbeing Board is made up of councillors, doctors, managers from Adults and Communities, Children and Young People's Services and Public Health, as well as representatives of patients and the public.

Its role is to help improve the health and wellbeing of the population of Leicestershire, by making sure people work together to provide good services.

- **Adults and Communities Management Group**

The Partnership Board Steering Group reports annually to the Adults and Communities Management Group who are responsible for agreeing the funding for the Board.